



SUBMITTAL DRAWING



TMS Johnson, Inc. | 763-544-5442 | www.tmsj.com
Twin Cities: 2908 Nevada Ave N, New Hope, MN 55427
Rochester: 3270 19th St NW, Suite 210, Rochester, MN 55901

Manufacturer's Recommendations

LOADS – Always use product within its stated Safe Working Load (SWL).

LIFTING & MOVEMENT – Do not use for lifting, such as in a crane or pulley situation, or for hanging services exhibiting movement or dynamic behavior. Designed for hanging statically positioned services only.

INSTALLATION: Do not walk or stand on the Gripple product installation.

PAINTING – Do not paint the Trapeze fastener. Ensure that the fastener is in its final position prior to applying any paint to the cable assembly. Do not move fastener after painting

CABLE – Always use Gripple supplied and specified cable. Never use on coated cable or other cable. Trim any damaged filaments with Gripple wire cutters before use.

ENVIRONMENT – Gripple products, including Stainless Steel, are NOT suitable for use in chlorinated / swimming pool environments. Use standard Gripple hangers in **DRY LOCATIONS ONLY**. Stainless Steel Gripple hangers are **SUITABLE FOR DAMP LOCATIONS**.

LUBRICATION – Do not apply oil or any other lubricant to the Gripple fastener or any other part of the cable assembly.

HANGING AT AN ANGLE TO VERTICAL – Ensure that the load calculation considers the effect of 'side load'. For example, at an angle of 60° to vertical, the SWL is reduced by 50%. (See published technical information on website or in Product Guide.)

REPAIR, MODIFICATION, AND RE-USE: Do not repair, modify, or re-use Gripple products. If you have any questions regarding product performance, please contact grippleinc@gripple.com.

Failure to comply with these recommendations may result in product malfunction and possible damage to property or person and will invalidate the Gripple warranty. Gripple products are warranted to conform to the manufacturer's published specifications at the time of shipment and to be free from defects in materials and workmanship. No other warranty, whether express or implied, including any warranty of merchantability or fitness for purpose, shall exist in connection with the sale or use of any Gripple product.

Safe Working Load*

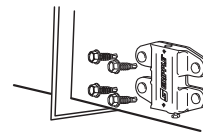
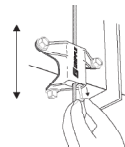
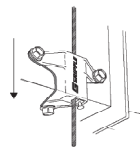
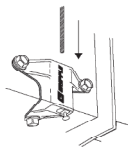
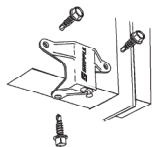
Size	Max Load (lbs)
No. 2	100

Duct/Butterfly Trapeze Fastener

**** Installs with screws directly onto service.****

TO RAISE SERVICE, support load and continue pushing DT/BT fastener up the cable.

TO RELEASE OR LOWER SERVICE, support load and pull pin to release cable from the fastener. Pin remains in unit—do not unscrew pin and remove.



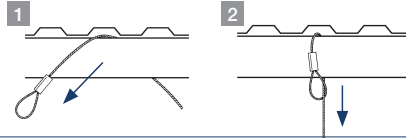
For further technical assistance, please contact:

Gripple Inc. 1611 Emily Lane / Aurora, IL 60502 Phone: 630.406.0600 Email: grippleinc@gripple.com

INST-DTBT-USA
www.gripple.com/us

LOOP

For choking around bar joists, beams, and roof trusses.



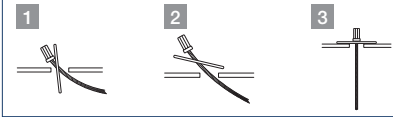
STUD

For anchoring into concrete ceilings, and metal decking or brackets.



TOGGLE

For inserting into pre-drilled holes of light fixtures or metal decking.



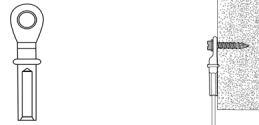
HOOK

For snapping onto light fixtures, beam & purlin clips, or cable basket & tray.



EYELET

For bolting to fixtures or services, wood beams, or brackets.



90° EYELET

For shot firing into concrete or steel. Can be used with mechanical anchors.



BARREL

For attaching to a 1/4" male thread product.



**For further technical assistance,
please contact:**

Gripple Inc.

1611 Emily Lane / Aurora, IL 60502

Phone: 630.406.0600

Email: grippleinc@gripple.com

www.gripple.com/us



INST-DTBT-USA
www.gripple.com/us